



Healy Public Schools USD 468

5006 North Dodge Rd, Healy, KS 67850
(620) 398-2248
<http://www.usd468.org>

District Accreditation Status: **Accredited**
ESSA Annual Meaningful Differentiation:
Grades: **PK-12**
Superintendent: **Cheryl Cook**

Demographics



53 Students

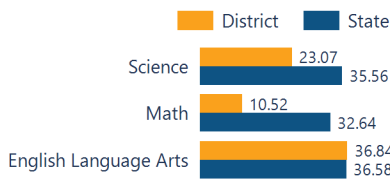
- African American 0.00 %
- Hispanic 22.64 %
- Other 0.00 %
- White 77.36 %

District Kansans Can Star Recognition

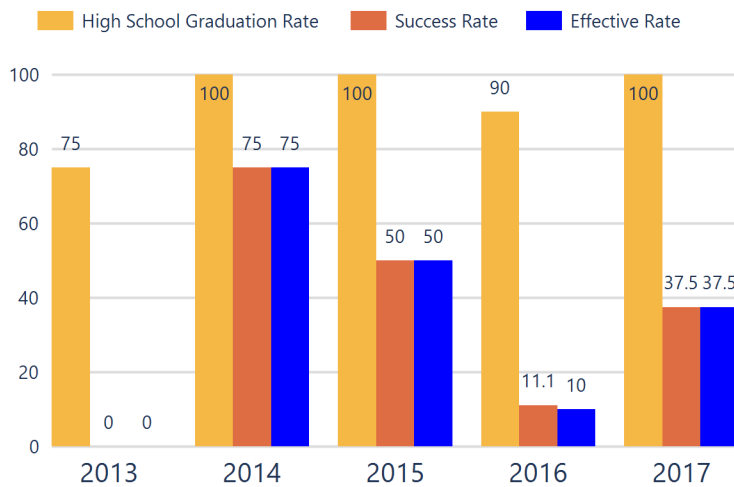
| | Gold | Silver | Bronze | Copper |
|---|------|--------|--------|--------|
| Academically Prepared for Postsecondary Success | | | | |
| Graduation Rate | | | | |
| Postsecondary Success | | | | |

Academically Prepared for Postsecondary Success

The percentage of students who scored at Levels 3 and 4 on the state assessment.



District Postsecondary Effectiveness



Kansans CAN lead the world!
Graduation
95%
Effective Rate 70-75%

Five-Year Graduation Avg
92%

Five-Year Success Avg
30%

Five-Year Effective Avg
28%

95% Confidence Interval for the Predicted Effectiveness Rate
29.2 - 33.3%

The numerator and denominator in the Five-Year Averages contain total student counts over five years (2012-2016).

- Graduation Rate:** The 4-year adjusted cohort graduation rate is the number of students who graduate in four years with a regular high school diploma divided by the number of students who entered high school as 9th graders four years earlier (adjusting for transfers in and out).
- Success Rate:** A student must meet one of the four following outcomes within two years of High School graduation.
 - Student earned an Industry Recognized Certification while in High School.
 - Student earned a Postsecondary Certificate.
 - Student earned a Postsecondary Degree.
 - Student enrolled in Postsecondary in both the first and second year following High School graduation.
- Effective Rate:** The calculated Graduation Rate multiplied by the calculated Success Rate.

GRADUATION RATE

The four-year adjusted cohort graduation rate is the percentage of students in a cohort, adjusted for transfers into and out of the school, district, or state, who graduate with a regular high school diploma within four years of entering high school.

ATTENDANCE RATE

Rate at which students are present at school, not including excused or unexcused absences.

CHRONIC ABSENTEEISM

Percentage of students who miss 10% or more of school days per year either with or without a valid excuse.

DROPOUT RATE

The dropout rate is calculated annually and reflects the number of seventh–twelfth grade students who drop out in any one school year. A dropout is any student who exits school between October 1 and September 30 with a dropout EXIT code AND does not re-enroll in school by September 30.

| | | |
|--------------|-------------|---|
| 66.7% | State: 87.5 | District ESSA Expenditures Per Pupil |
| | | \$17,402 |
| 96.2% | State: 94.5 | Expenditures reflect those for the normal day-to-day operation of schools as reported by the Local Education Agency. The following expenditures are excluded: capital outlay, school construction and building improvements, equipment and debt services. |
| 10.2% | State: 13.9 | State: \$11,415 |
| N/A | State: 1.4 | Click here for State Financial Accountability. |

Healy Public Schools USD 468

K.S.A. 72-5178 Accountability Report 2018-2019



District Academic Success

State Assessment scores are displayed by student subgroup over three years time in three subjects: Math, English Language Arts (ELA), and Science.

ALL STUDENTS

| | 2016-17 | | | 2017-18 | | | 2018-19 | | |
|---------|---------|-------|-------|---------|-------|-------|---------|-------|-------|
| | Math | ELA | Sci | Math | ELA | Sci | Math | ELA | Sci |
| Level 1 | 50.00 | 28.94 | 28.57 | 51.51 | 29.41 | 41.66 | 31.57 | 21.05 | 38.46 |
| Level 2 | 36.84 | 36.84 | 35.71 | 30.30 | 50.00 | 50.00 | 57.89 | 42.10 | 38.46 |
| Level 3 | 7.89 | 26.31 | 35.71 | 12.12 | 17.64 | 8.33 | 10.52 | 36.84 | 23.07 |
| Level 4 | 2.63 | 5.26 | 0.00 | 6.06 | 2.94 | 0.00 | 0.00 | 0.00 | 0.00 |

FREE AND REDUCED LUNCH STUDENTS

| | 2016-17 | | | 2017-18 | | | 2018-19 | | |
|---------|---------|-------|-----|---------|-------|-----|---------|-------|-----|
| | Math | ELA | Sci | Math | ELA | Sci | Math | ELA | Sci |
| Level 1 | 66.66 | 28.57 | N/A | 52.38 | 36.36 | N/A | 28.57 | 21.42 | N/A |
| Level 2 | 23.80 | 47.61 | N/A | 28.57 | 54.54 | N/A | 64.28 | 57.14 | N/A |
| Level 3 | 4.76 | 19.04 | N/A | 14.28 | 9.09 | N/A | 7.14 | 21.42 | N/A |
| Level 4 | 0.00 | 0.00 | N/A | 4.76 | 0.00 | N/A | 0.00 | 0.00 | N/A |

STUDENTS WITH DISABILITIES

| | 2016-17 | | | 2017-18 | | | 2018-19 | | |
|---------|---------|-----|-----|---------|-----|-----|---------|-----|-----|
| | Math | ELA | Sci | Math | ELA | Sci | Math | ELA | Sci |
| Level 1 | N/A | N/A | N/A | N/A | N/A | N/A | N/A | N/A | N/A |
| Level 2 | N/A | N/A | N/A | N/A | N/A | N/A | N/A | N/A | N/A |
| Level 3 | N/A | N/A | N/A | N/A | N/A | N/A | N/A | N/A | N/A |
| Level 4 | N/A | N/A | N/A | N/A | N/A | N/A | N/A | N/A | N/A |

AFRICAN-AMERICAN STUDENTS

| | 2016-17 | | | 2017-18 | | | 2018-19 | | |
|---------|---------|-----|-----|---------|-----|-----|---------|-----|-----|
| | Math | ELA | Sci | Math | ELA | Sci | Math | ELA | Sci |
| Level 1 | N/A | N/A | N/A | N/A | N/A | N/A | N/A | N/A | N/A |
| Level 2 | N/A | N/A | N/A | N/A | N/A | N/A | N/A | N/A | N/A |
| Level 3 | N/A | N/A | N/A | N/A | N/A | N/A | N/A | N/A | N/A |
| Level 4 | N/A | N/A | N/A | N/A | N/A | N/A | N/A | N/A | N/A |

HISPANIC STUDENTS

| | 2016-17 | | | 2017-18 | | | 2018-19 | | |
|---------|---------|-----|-----|---------|-----|-----|---------|-----|-----|
| | Math | ELA | Sci | Math | ELA | Sci | Math | ELA | Sci |
| Level 1 | N/A | N/A | N/A | N/A | N/A | N/A | N/A | N/A | N/A |
| Level 2 | N/A | N/A | N/A | N/A | N/A | N/A | N/A | N/A | N/A |
| Level 3 | N/A | N/A | N/A | N/A | N/A | N/A | N/A | N/A | N/A |
| Level 4 | N/A | N/A | N/A | N/A | N/A | N/A | N/A | N/A | N/A |

N/A: To protect student privacy, when a subgroup has fewer than 10 students, the data are not displayed.

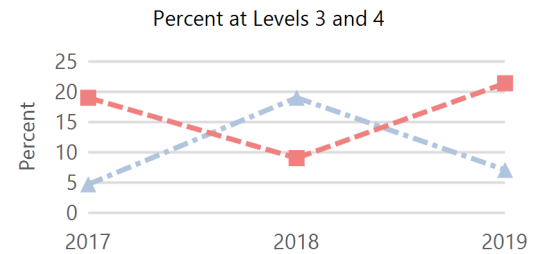
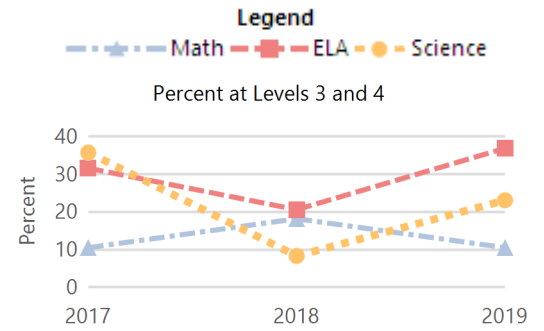
ACT Performance (2018 School Year)

ACT is a national college admissions exam that includes subject level tests in English, Math, Reading and Science. Students receive scores that range from 1 to 36 on each subject and an overall Composite score. This report provides the average Composite score for the 2018 graduating seniors who took the ACT as sophomores, juniors, or seniors.

Note: Not all eligible students completed an ACT.



Academically Prepared for Postsecondary Success



Percent at Levels 3 and 4
*To protect student privacy, when a subgroup has fewer than 10 students the data are not displayed.

Percent at Levels 3 and 4
*To protect student privacy, when a subgroup has fewer than 10 students the data are not displayed.

Percent at Levels 3 and 4
*To protect student privacy, when a subgroup has fewer than 10 students the data are not displayed.

